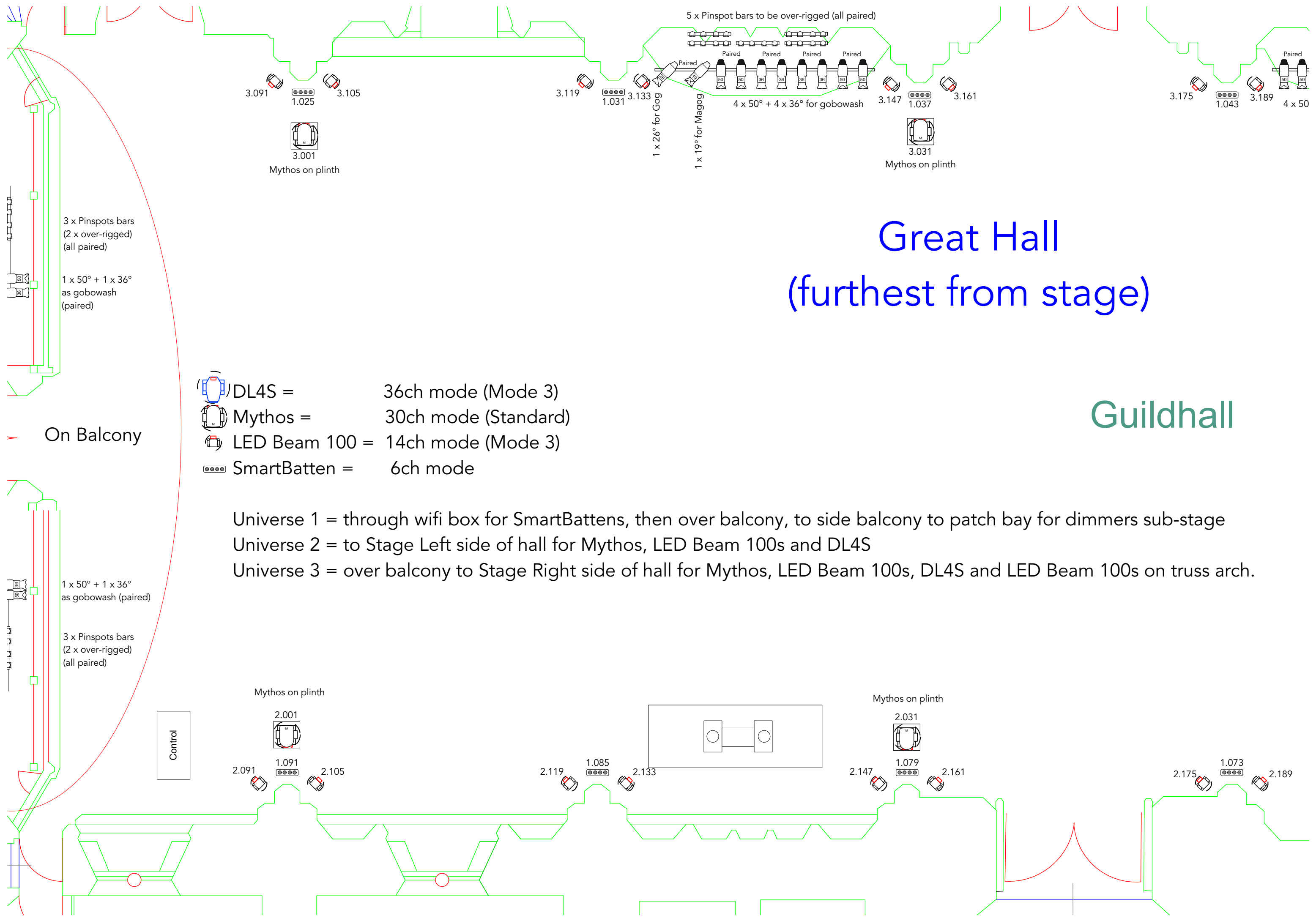

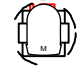

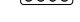


# Great Hall (furthest from stage)

## Guildhall



-  DL4S = 36ch mode (Mode 3)
-  Mythos = 30ch mode (Standard)
-  LED Beam 100 = 14ch mode (Mode 3)
-  SmartBatten = 6ch mode

Universe 1 = through wifi box for SmartBattens, then over balcony, to side balcony to patch bay for dimmers sub-stage  
 Universe 2 = to Stage Left side of hall for Mythos, LED Beam 100s and DL4S  
 Universe 3 = over balcony to Stage Right side of hall for Mythos, LED Beam 100s, DL4S and LED Beam 100s on truss arch.

3 x Pinspots bars  
(2 x over-rigged)  
(all paired)

1 x 50° + 1 x 36°  
as gobowash  
(paired)

On Balcony

1 x 50° + 1 x 36°  
as gobowash (paired)

3 x Pinspots bars  
(2 x over-rigged)  
(all paired)

Control

Mythos on plinth

Mythos on plinth

5 x Pinspot bars to be over-rigged (all paired)

4 x 50° + 4 x 36° for gobowash

1 x 26° for Gog  
1 x 19° for Magog

Mythos on plinth

3.091  
1.025  
3.105  
3.001  
Mythos on plinth

3.119  
1.031  
3.133

3.147  
1.037  
3.161

3.175  
1.043  
3.189  
4 x 50

2.091  
2.001  
1.091  
2.105

2.119  
1.085  
2.133

2.147  
2.031  
1.079  
2.161

2.175  
1.073  
2.189